

## IPAQ C201

# Analog PC-Programmable 2-wire Transmitter for Pt100 Input



IPAQ C201 is an analog, non-isolated, easy-to-use 2-wire transmitter for Pt100 input. Configuration is made in seconds with the user friendly software, ConSoft. No external power supply required for configuration. IPAQ C201 is designed for Pt100 in 3-wire connection according to different standards.

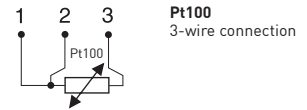
- Robust terminals with test connections
- Only 18.5 mm / 0.72 inch high
- Input: Pt100 in 3-wire connection
- PC configurable measuring ranges without need for calibration
- Temperature linear output
- Very short response time
- Excellent EMC immunity
- Configuration without external power
- Easy-to-use Windows configuration software
- USB communication
- Withstands vibrations up to 10 g

### Specifications:

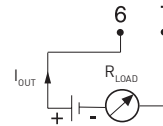
<b>Input Pt100</b>	3-wire connection
Pt100 ( $\alpha=0.00385$ )	-50 to +850 °C / -58 to +1562 °F
Pt100 ( $\alpha=0.003902$ )	-50 to +850 °C / -58 to +1562 °F
Pt100 ( $\alpha=0.003916$ )	-50 to +850 °C / -58 to +1562 °F
<b>Sensor break</b>	Upscale or downscale
<b>Adjustments</b>	
Zero	-50, -25, 0, +25, +50 °C / -58, -13, +32, +77, +122 °F
Minimum span	20 °C / 36 °F
<b>Sensor error compensation</b>	±1 % of span
<b>Output</b>	4-20 mA, temperature linear
<b>Response time</b>	< 50 ms
<b>Ambient temperature</b>	
Operation and storage	-40 to +85 °C / -40 to +185 °F
<b>Galvanic isolation</b>	No
<b>Power supply</b>	8.5 to 32 VDC
<b>Accuracy <sup>1)</sup></b>	Max. of ±0.1 °C / ±0.2 °F or ±0.1 % of span
<b>Connection head</b>	DIN B or larger

<sup>1)</sup>Includes calibration and linearity errors

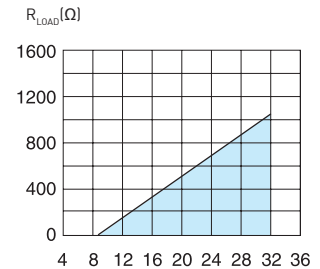
### Input connections



### Output connections



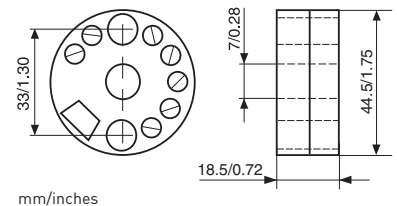
### Output load diagram



Supply voltage U [V DC]

$$R_{LOAD} = (U - 8.5) / 0.022$$

### Dimensions



### Ordering information

IPAQ C201	70C2010010
PC configuration kit (USB-conn.)	70CFGUS001
Configuration	70CAL00001